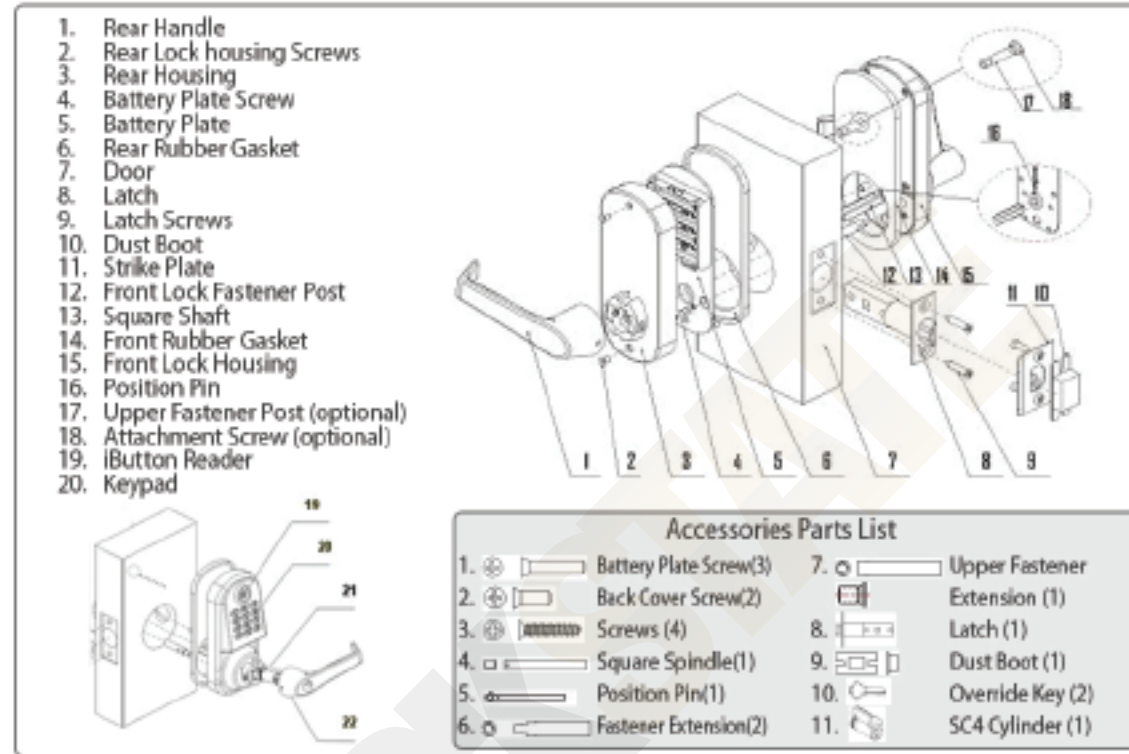




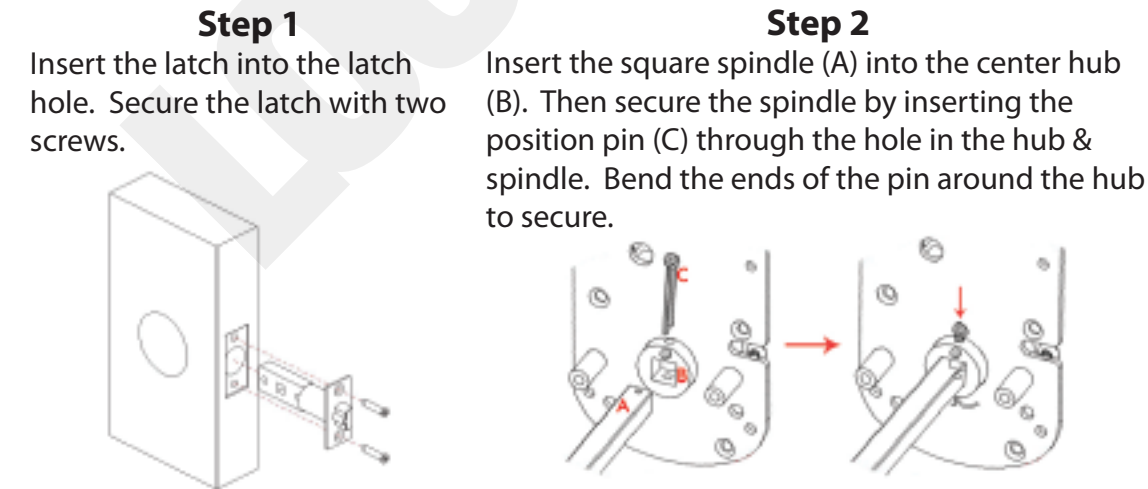
Installation & User Manual

For use with ResortLock®RL2000 and LockState®LS1250

Major Lock Parts List

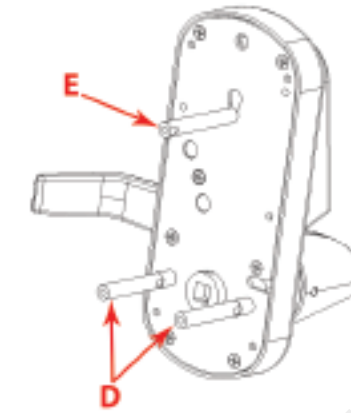


Installation Instructions



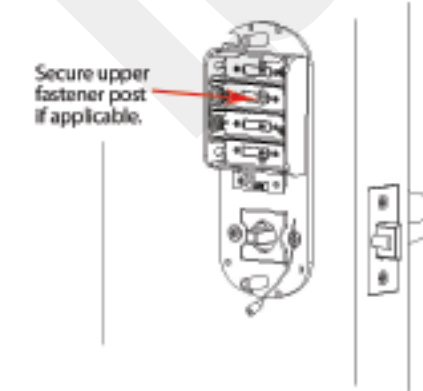
Step 3

Screw in and tighten both fastener extensions (D). Attach and tighten optional upper fastener post (E) if needed. Upper post is recommended but not required.



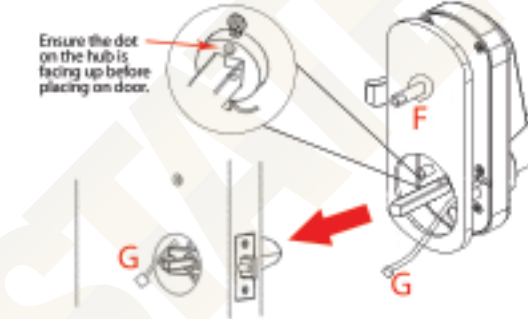
Step 5

Attach the battery plate on the inside door with the rubber gasket between the door and battery plate. Feed the power plug through the small rectangular hole on the plate. Secure the battery plate to front lock fastener posts with 2 screws.



Step 4

Place the front of the lock onto the door with the rubber gasket (F) between the door and the lock housing. Feed the power cable (G) through the door hole.



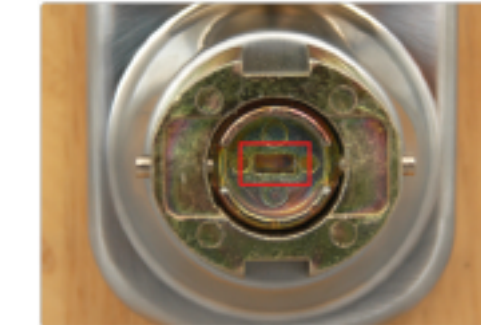
Step 6

Install batteries and plug in the power cable (G). Secure the back lock housing onto the battery plate with the upper and lower screws. Press both catch pins in and snap the rear handle onto drive shaft.



Front Handle & Key Installation

1. Ensure that the key override slot is in the horizontal position.
2. Slide the key cylinder into the back of the handle.



3. Insert the key into the key cylinder from the front of the handle and turn 90° clockwise.
4. Slide the handle onto the brass drive shaft until it hits the catch pins.



5. Press in both catch pins and snap handle over pins.
6. Turn key back to the left and remove the key from the key cylinder.



Lock Operation Guide

General Information:

- **Door Handle:** The handle is reversible so it will fit both right and left-handed doors. The handle will always turn even when the door is locked. However, when locked, the handle will not retract the latch.
- **Exit Programming Mode:** Enter * to exit programming mode, or wait for 10 seconds.
- **Low battery warning:** When batteries are low, the red LED will flash and beep five times after entering a valid User Code.
- **Unlocking indicator:** Green light will flash and beep twice.
- **Locking indicator:** Red Light will flash and beep three times.
- **Reset:** To set the lock back to default, press and hold the reset button for 10 seconds until you hear 3 beeps and 3 red flashes.



Reset Button

Manufacture Default Setting:

- **Daylight Saving Mode:** Disabled
- **Auto Lock/Unlock:** Disabled
- **Default Programming Master Code:** 123456
- **Lock Mode:** Storehouse
- **Test Code:** 0 #

Unlocking the Door:

There are several ways to unlock the lock, including the following methods:

- **Keycode:** Enter a User Code, then press #
- **iButton:** Touch the iButton key to the lock reader (must be preprogrammed)
- **iButton+Keycode:** Touch the iButton key to the lock reader, then enter User Code and press #
- **One time service code:** One time code, then press #
- **Manual key:** Insert and turn the override key 90 degrees clockwise, then turn the handle

Terms:

Master Code (MC): The master code enters the lock into programming mode. It will not lock or unlock the door. When MC# is entered, the red LED starts to flash indicating the lock is in programming mode. If more than 6 seconds pass in between programming entries, the lock will return to normal operational status. For maximum security change the default Master Code.

Test Code: The installer test code (0#) is a default temporary code for the installer to test the lock. The code will be deleted after the first new User Code is added to the lock.

User code: User Codes are the normal codes for day-to-day operation.

Service Code: Service codes can be used for maintenance personnel or vendors. Service codes only grant one-time access. A total of 10 sets of service codes can be programmed into each lock.

Passage Mode: When Passage Mode is enabled, the lock will stay in an unlocked status after a valid entry code is entered. Enter a valid entry code to re-lock the door.

Storehouse Mode (Auto-Lock): For each valid entry, the lock will automatically re-lock after 5 seconds.

Lockout Mode: Enabling will freeze the lock in its current status (lock or unlock) and temporarily disable all user codes and iButton keys. To cancel, re-enter the function code 99.

Time Format: 24 hr. clock ~ 8:30AM = 0830; 5:30PM = 1730 **Schedule Date:** 1=Mon, 2= Tue, ..., 7=Sun

Quick Start Guide

Step 1: Program a new Master Code into the lock.

The Master Code DOES NOT unlock or lock the door. It is only used to program your lock. The default Master Code is 123456. For security purposes, you will need to change this to your own Master Code. Decide on a new Master Code and write it here: _____

To program a new Master Code, enter the following into the lock's keypad:

123456 # 11 # Your Master Code # Your Master Code Again

If done **correctly**, after the last # you press you'll hear 2 beeps with 2 green flashes.

Step 2: Program the Date & Time.

Some functions on the lock will not work on the lock unless the date & time are programmed. To program the date & time, enter the following:

Master Code # 88 # YYMMDDHHMM

Example: If the date and time is 05/30/2010 at 3:32PM, you would enter:
Master Code # 88 # 1005301532

Step 3: Program a User Code into the lock.

****Important: Your lock will not lock until a valid User Code is programmed and used on the lock.**

User Codes are the codes you will use to unlock and lock your door. These codes will remain active in the lock until they are deleted (if desired). Up to 800 permanent codes can be programmed into the lock. Here is how:

Master Code # 01 # 1-9 digit user code # # #

If done **correctly**, you will hear two beeps after pressing the 3rd #, then a red light after the 4th #.

Step 4: Set the Passage Mode.

Your lock is shipped in Storehouse (Auto Lock) Mode. This means the lock will re-lock 5 seconds after it is unlocked. To change this to passage mode, enter the following:

Master Code # 15 # 1-7 Schedule # hhmm start, hhmm end

Example: If you want the lock to always be in Passage Mode, enter:
Master Code # 15 # 1234567 # 0001 2359 # (7 days of the week from 12:01AM to 11:59PM)

Step 5: Enable Daylight Saving Time.

If you live in an area that observes Daylight Saving Time, you will want to enable this function. Enabling does not change the current time on the lock. The time will either move forward or back on the specified pre-programmed date. To enable, enter: # Master Code # 31 #

Complete List of Manual Programming Functions

1. To set a new or change the Master Code (and not delete existing user codes):

current or default mc # 11 # 1-9 digits new mc # 1-9 digits new mc

2. To change Master Code (and delete all user codes):

current or default mc # 22 # 1-9 digits new mc # 1-9 digits new mc

3. Set date & time - (24 hr. clock, Example: 2:45PM on July 12, 2010 = 1007121445)

mc # 88 # yymmddhhmm

4. Enter one or more User Code with no restriction (for multiple codes, repeat highlighted)

mc # 01 # 1-9 digits user code # #

5. Enter one or more iButton key with no restriction (for multiple codes, repeat highlighted)

mc # 01 # Hold iButton key to lock reader #

6. Enter one or more iButton key + User Code with no restriction (for multiple codes, repeat highlighted)

mc # 01 # 1-9 digits user code # Hold iButton key to lock reader #

7. Enter one or more User Code with time restriction (for multiple codes, repeat highlighted)
(beginning time) (ending time)

mc # 01 # 1-9 digits user code # yymmddhhmm # yymmddhhmm

8. Enter one or more iButton key with time restriction (for multiple codes, repeat highlighted)
(beginning time) (ending time)

mc # 01 # iButton key # yymmddhhmm # yymmddhhmm

9. Enter one or multiple iButton + User Codes with time restriction (for multiple, repeat highlighted)
(beginning time) (ending time)

mc # 01 # 1-9 digit code # iButton key # yymmddhhmm # yymmddhhmm

10. Enable/ disable Passage Mode (2 beeps = Auto-Relock Mode ~ 4 beeps = Passage Mode)
(1=Monday, 7=Sunday)

mc # 15 # 1-7 Schedule # hhmm start hhmm end

11. Enable/ disable LED blink (2 beeps = blink off ~ 4 beeps = blink on)

mc # 18

*Warning: enabling blink mode will drain batteries more quickly. Lock will blink red every 2 seconds when door is locked and green when door is unlocked

12. Enable daytime saving

mc # 31

* Lock time does not change when you enable this function. The lock will automatically adjust time when Daylight Saving Time starts and ends.

13. Disable daytime saving

mc # 32

14. Add One Time Service codes (up to 10) (for multiple users, repeat highlighted)

mc # 33 # 1-9 digits user code

15. Delete one User Code or iButton user

mc # 46 # User code or touch ibutton

16. Enable Auto-UNlock function

mc # 64

17. Disable Auto-UNlock function

mc # 65

18. Set Automatic Unlock time (Enable function #12 first)

mc # 63 # hhmm

19. Enable Auto-Lock function

mc # 67

20. Disable Auto-Lock function

mc # 68

21. Set Automatic Lock time (Enable function #15 first)

mc # 66 # hhmm

22. Enable/Disable temporary lockout of all users

mc # 99

Advanced Schedule Access

23. Set schedule for User Code: (1=Monday, 7=Sunday)

mc # 45 # 1-9 digis User Code # 1-7 Schedule # hhmm start hhmm end

24. Set schedule for iButton user: (1=Monday, 7=Sunday)

mc # 45 # iButton key # 1-7 Schedule # hhmm start hhmm end

For Example: to set schedule from 8:00AM to 5:00PM, Mon. to Friday

mc # 45 # 1-9 digit User Code # 12345 # 0800 1700